

Planetary Centrifugal Mixer
THINKY MIXER
ARE-312



Going one step further than the flagship models, the next generation of world-standard models have made their debut.

- ✓ Improved mixing power and defoaming power
- ✓ Suppresses the temperature rise of the main unit and allows temperature measurement inside the device
- ✓ Communication function supports traceability and control from external devices
- ✓ CE certified model (EN61010-1:2010+A1:2019)
- ✓ Long-term operation is possible even with highly loaded materials (maximum operation time 30 minutes)
- ✓ Improved safety with the addition of a impact sensor

Maximum capacity
310 g

Standard container
300 & 150ml
 HDPE container

Application

Intuitive operation interface and VA panel adopted. Displays the rotation speed during operation in real time



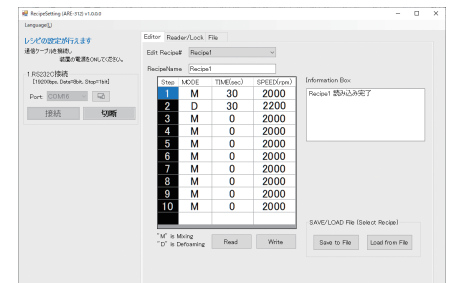
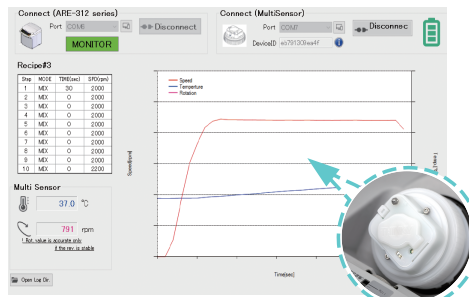
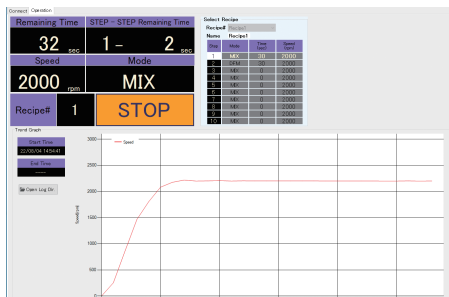
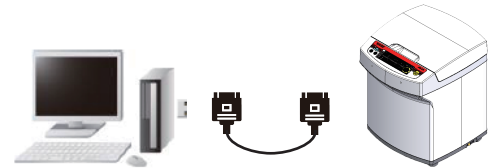
Step, mixing/defoaming mode, time, and rotation speed can be set using the three buttons "SELECT", "+" (plus), and "-" (minus), and up to 20 recipes can be registered.

In addition, the rotation speed (revolution) during operation is displayed in real time in the center of the panel.

Communication function

Provides "remote control" and "traceability" functions.

The communication protocol is publicly available. In addition, a Windows application that uses communication functions is included as standard.



Controller

You can start/stop operation, report operating status, report abnormal stop information, and output device information from external devices.

monitoring

Get mixer operating information. It can also be linked with multiple sensors depending on the operating status. Measured data can be saved to a file.

Recipe settings

You can edit recipes from your PC. It also has recipe file import/export and recipe lock functions.

Specifications

Product name	Planetary Centrifugal Mixer "THINKY MIXER"
Model	ARE-312
System	Planetary propeller-less mixing
Operation Time Setting	Timer setting range: 0 s to 30 min in 1 s increments
Programming Function	20 memories with 10 steps
Standard Container*1	Inner volume:300 ml and 150 ml , Material: HDPE
Maximum Capacity*2	310 g
External Communication Function	RS232C serial port (D sub 9 pin)

Power Supply	Voltage	Single-phase AC100~230V±10%, 50/60Hz
	Power Consumption	Approx. 50 VA (standby) Max 900 VA (operation)
Operating Environment	10 to 35 °C, 35 to 85 % RH(without condensation)	
Safety Mechanism*3	Revolution Sensor, Vibration Sensor, impact Sensor, Door Sensor	
Unit Dimensions	H390 × W300 × D340 (mm)	
Unit Weight	Approx. 21 kg	

*1: Contact us because the actual volume of mixing may vary depending on the containers, materials, and conditions.

*2: Total mass to mount on the cup holder, including materials, containers, and adapters.

*3: Products are shipped and delivered in a locked state. Release the lock before use.

Product appearance/specifications may change without notice.

THINKY CORPORATION

Headquarters: 2-16-2 Sotokanda, Chiyoda-ku, Tokyo 101-0021
Phone: +81-3-5207-2713 Fax: +81-3-5289-3281

THINKY USA Inc.: 23151 Verdugo Drive, Suite 112 Laguna Hills, CA 92653, USA

THINKY CHINA: East building, HaiAn Kafunuo Mansion, Shennan road,
Qianhai road, Nanshan district, Shenzhen

<https://www.thinkymixer.com/en-gl/>

Sales agent

RIFERIMENTO PER L'ITALIA



Qi srl

t +39 06 9105461

www.qitech.it | sales@qitech.it